

STANDING TOGETHER FOR THE FUTURE OF HOSPICE CARE

your hospice matters

harbour
hospice

Te Kahu Pairuri mai i
Takarunga ki Te Hana

February | Huitanguru 2026



“Hospice meant so much to Mum, and it will always hold a special place in our hearts”

Danielle

A BOLD
ACT OF
KINDNESS
FOR HOSPICE

Kia ora, whether we're out in the community or in our inpatient units, every day we see what it truly means to stand together - in moments of vulnerability, love, grief and generosity. It's in the way our teams show up for tūroro/patients, families and whānau, and in the way you continue to show up for us.



The first 2026 issue of Your Hospice Matters is a celebration of compassion in action, and a reminder of the very real impact your support makes. Stories like Danielle Fifita's show that hospice care doesn't end when a life does. It stays with families long afterwards, shaping how they remember, heal and, often, give back.

Danielle's appreciation of care for her mum inspired her to raise awareness and funds for Harbour Hospice. This is proof of the deep, lasting connection people feel to this place and the unique care given here.

Her story also reflects the heart of our latest Impact Report published in November, and acts as a poignant reminder of what's possible when tūroro/patients, families, whānau, our teams and supporters like you stand together. It shows how hospice care exists because of our community and how, together, we can ensure this care is here, free of charge, for generations to come.

Thank you once again for standing with us, and for helping secure the future of hospice care in our community.

Ngā mihi,

Amanda

Amanda Fowler
Harbour Hospice Chief Executive

Trusts provide vital support

Thank you to the following organisations, who have contributed towards medical supplies, whānau and volunteer resources, operating costs and equipment, salaries, vital equipment and our family support programme. Your support is vital in enabling us to continue providing compassionate care to those who need it.

Akarana Community Trust
BlueSky Community Trust
Boyd Clarke Foundation
Charles Rupert Stead Charitable Trust, proudly managed by Perpetual Guardian
Constellation Communities Trust
Dairy Flat Community Trust
David Levene Foundation
Dorothy Williams Charitable Trust, proudly managed by Perpetual Guardian
Dragon Community Trust
Ernest Hyam Davis and Ted and Mollie Carr Legacies, proudly managed by Perpetual Guardian
Four Winds Foundation
Freemasons Foundation
Lister Presbyterian Health Trust
Louisa and Patrick Emmett Murphy Foundation, managed by Public Trust
Maurice Paykel Charitable Trust
Milestone Foundation

North & South Trust Ltd
NR & JH Thomson Charitable Trust, proudly managed by Perpetual Guardian
Oxford Sports Trust
Pelorus Trust
Pub Charity Ltd
St Joans Charitable Trust, proudly managed by Perpetual Guardian
Tairāwhiti Trust Incorporated
The A J Scott Fund, managed by Public Trust
The David & Genevieve Becroft Foundation
The Lake Memorial Charitable Trust, proudly managed by Perpetual Guardian
VMD Collier Charitable Trust, proudly managed by Perpetual Guardian
Westfield Albany - Local Heroes Programme
Zelda Roberts Charitable Trust, managed by Public Trust
Z Stations - Good in the Hood programme

Your community or family trust can support patient care too. Please contact Grants Manager Lesley on 021 871 064 or Lesley.Cranston@harbourhospice.org.nz

YOUR SUPPORT IS STRENGTHENING CARE RIGHT ACROSS OUR SERVICE



More people are accessing the specialist care they need, when they need it

1434 tūroro/patients & families in our care
up 5% from 23-24

15% increase in inpatient admissions
from 23-24



34% increase in day respite admissions
from 23-24

3,798 inpatient bed days
up 4% from 23-24



Your support helps us meet people wherever they are - at home, in aged care or out in the community



33,600 face-to-face & remote community interactions

more than **9** at-home visits per tūroro/patient (on average)



Together, we're strengthening the skill and confidence of healthcare partners across our region

1167 Fundamentals of Palliative Care modules completed
(up 424 from 2023-24)

Over **80%** of Aged Residential Care (ARC) tūroro/patients reached through our Poi programme (Poi delivers high-quality, personalised care through training, coaching and collaboration with ARC teams.)

Want to learn more?

Head to: harbourhospice.org.nz/impact_reports



A BOLD ACT OF KINDNESS FOR HOSPICE

Last December Danielle Fifita did something she never thought she'd do. She took to the stage at her local gym and allowed her beautiful, long hair to be shaved off. The mother of two and doctor from Whangārei Hospital had always kept her hair long. But she wanted to do something impactful to raise funds and awareness for Harbour Hospice.

Her 'Hairless for Hospice' event, held in honour of her mother, Elizabeth Apiata, who died in our care in May 2024, took place at a CrossFit gym where Danielle is a regular. It raised just over \$6700 for Harbour Hospice - significantly more than she thought she'd raise.

"It was overwhelming and so beautiful to see lots of different communities coming together," Danielle says. "All the love, support, messages, kōrero and hugs from everyone had me in tears!"

As a doctor, Danielle knew about hospice before Elizabeth began receiving hospice care, and she'd referred patients to its specialist services. But it wasn't until her mum was part of Harbour Hospice's fold that she realised just how unique and compassionate those services were.

"As a doctor, I expected that I would be able to do everything for Mum. But hospice allowed my sister Moana and me to just be her daughters, and that was such a gift. We could just hold Mum and witness her being cared for so beautifully and respectfully. The nurses always talked to her and explained what they were doing. It was beautiful to watch."

Danielle's fundraiser took place 18 months after her mother died - testament to how deeply touched people are by our care, and how connected to hospice they remain long after someone has died.

"We can't put a price on the care and love hospice showed Mum and our whānau during the most difficult of times," Danielle says. "Hospice meant so much to Mum, and it will always hold a special place in our hearts. My wish is that the money raised will help ensure that the beautiful team can continue to provide the same care to other whānau."

"The most special gift of all was allowing us to care for our mum in her last week of life the way we wanted to, within their space."

Danielle

"In the last two years of Mum's life, hospice provided in-home reviews, round-the-clock phone call advice, they arranged urgent doctor reviews/scans, transport to appointments and social groups, respite care in the Inpatient Unit, they even helped us arrange our last celebration of Mum's beautiful life for her 60th birthday. The most special gift of all was allowing us to care for our mum in her last week of life the way we wanted to, within their space."

It was during that week that Danielle decided she'd raise funds and awareness for Harbour Hospice. "Just through talking with the nurses and asking, 'How do you get your funding?', I was gobsmacked when they told me that hospice only receives around half of its funding from the Government. I was amazed they could continue to operate."

"My wish is that the money raised will help ensure that the beautiful team can continue to provide the same care to other whānau."

Danielle



Top - Danielle (front, in grey) with her supporters.
Bottom left - Elizabeth Apiata, Danielle's mum.
Bottom right - Danielle after the shave with her family.

It's thanks to the support of individuals and families like Danielle's that hospice can continue to provide free specialist care to local families. While Health New Zealand funds 49% of our operating costs, we rely heavily on the support of our community to raise an additional \$10 million each year to cover the shortfall. We need our community as much as our community needs us.

Danielle says she was humbled to see her fundraiser sparked many conversations about hospice in her community. "Lots of our whānau - and I think Māori and Pacific people in general - don't know what hospice does, or the impact it has in the community. It was a full wraparound support system for Mum, and hospice never failed to show her the utmost respect, love and care. A service like this is vital in our community."



VOLUNTEERS MEET GROWING NEED

“They’re a real support to our nurses, and they’re also helping to strengthen our link with the community through sharing information and helping to dispel myths.”

Clinical Team Lead Bev Platt

As demand for our service grows and patients’ needs become more complex, we’re evolving our model of care to meet that demand head-on. Many of our volunteers come to us with phenomenal skill sets and a wealth of lived experience, and with the right support and training they can play a vital role in supporting our clinical teams to deliver an exceptional level of care.

With your support, we’ve introduced two new and pivotal volunteer programmes to our North Shore Inpatient Unit (IPU), designed to make the most of the skills and compassion they bring.

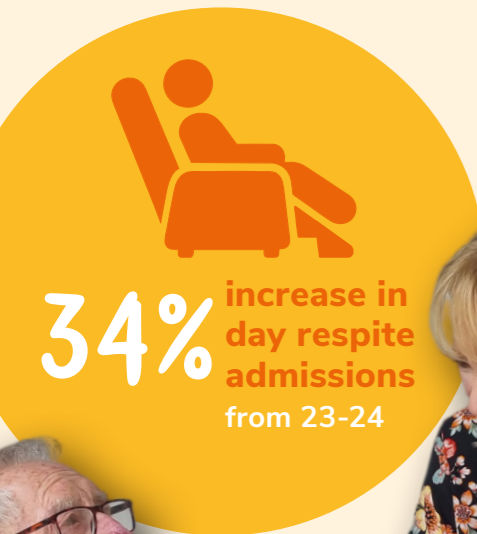
IPU Volunteer Programme

Our IPU volunteer programme, launched just before Christmas, sees volunteers offering practical support that frees up our nurses to focus on core duties and complex cases. “This provides an opportunity for our volunteers to really help ease the nurses’ load,” says Volunteer Programme Lead Tina Perenara. “They help the kitchen team deliver meals and give extra care and attention to patients. They prepare rooms for new patients and welcome visitors to the unit.”

Respite Care Volunteer Programme

This programme, launched last year, offers patients one day of respite care per week in the IPU, with volunteers providing companionship and support. Modelled on our successful day respite programme at Tui House in Warkworth, which has increased six-fold since its inception, early feedback from patients and carers show that the North Shore programme is already making a meaningful difference. Patients enjoy their respite days, and carers benefit from much-needed time to themselves.

These programmes reflect a new era of volunteer involvement - one where skilled, supported individuals are helping us extend our reach, strengthen our care, and meet the growing needs of our community.



Becoming a Harbour Hospice volunteer is a deeply meaningful way to support people in our care. As we look to grow these programmes this year, we’d love to hear from you. Please email: volunteer@harbourhospice.org.nz

Your support made Christmas brighter

Christmas shone brightly at our annual Trees of Remembrance, where more than 2000 of you paused to remember and celebrate loved ones. Amid the festive bustle, we were reminded of the strength and comfort of standing side-by-side as a community - sharing moments of reflection, remembrance and care.

So many of you took the time to pause, share a word, and honour your loved ones with tenderness. We were deeply moved by your stories and messages and grateful for every donation, big and small.

Together, your generosity raised around \$36,000, including at least \$3000 from donations at our giftwrapping station, run by a wonderful team of volunteers at Silverdale Mall. Christmas was also marked by Farmers’ annual hospice campaign, which raised an incredible \$54,269 through the sale of collectible baubles and shoppers donating to its Trees of Remembrance. Purchases of Christmas cakes added an incredible \$4000.

Finally, a heartfelt thanks to Judy and Peter, who generously shared their story for our Christmas appeal. Their experience showed that hospice care continues every day of the year, including Christmas - so families can focus on celebrating in meaningful ways, comforted in the knowledge that support is always just a phone call away.

Read their full story here: harbourhospice.org.nz/christmas-angels



Top to bottom - Volunteers, Di & Lynley; Emily Thomas, Harbour Hospice Fundraising Team with Tania from Pak'nSave; Mandy Campbell, Harbour Hospice Volunteer Services Team; Judy & Peter

COMING UP

For ticket sales and more information about these, and other exciting events, go to harbourhospice.org.nz/our-events

Art Affair
Tui House,
47 Morrison Dr,
Warkworth
Saturday 7 &
Sunday 8 March

Art Affair transforms Tui House into a beautiful gallery showcasing a curated collection of artworks for sale.

Tee off for Hospice
Helensville Golf Club, 197 Peak Road, Helensville
Friday 13 March

Gather your friends and colleagues for an amazing day on the Green raising funds for hospice.

SAVE THE DATE

Vintners' Brunch
Pullman Hotel
Sunday 30 August
Details coming soon for this exclusive food and wine matching event and flagship fundraiser.



Donate today to help us be there for families & whānau like Danielle's

your support makes it possible
[click here](#)
THANK YOU

HOW YOUR SUPPORT BECOMES CARE

Giving a one-off or regular donation

Every dollar you give strengthens the care our community relies on.



Leaving a gift in your Will

Your legacy ensures future generations receive the same compassionate care.



Becoming a volunteer

Your time, skills and aroha help support tūroro/patients, families and whānau.

Donating goods to our shops

Every item given, and every dollar spent, goes directly back into patient care.



Raising funds in your own way

A personal challenge, community event or something uniquely yours makes a real difference.



Sharing your story

Your experiences help others understand what hospice care is and the long-lasting impact it has.

“”